

Visualizing a Better Future in STEM



ABRCMS 2020

THE VIRTUAL EXPERIENCE

November 9 - 13, 2020

Final Program



Table of Contents

Conference Welcome (Avery August, Ph.D.)	3
Greetings (NIH Directors)	4
Schedule at a Glance	5
ABRCMS Steering Committee	7
Important Information	8
ABRCMS Tiered Sponsors	9
Plenary & Concurrent Scientific Speakers	10
The ABRCMS Program	12

Recipient of the 2019 AIMBE Excellence in STEM Education Award

Join the Conversation. Follow us on Twitter, Facebook, and Instagram to get the latest updates, opportunities, and featured speakers at ABRCMS 2020: The Virtual Experience.



facebook.com/ABRCMS



twitter.com/ABRCMS



instagram.com/ABRCMS

Don't forget to use the hashtag #ABRCMS

Welcome from Dr. Avery August



On behalf of the Annual Biomedical Research Conference for Minority Students (ABRCMS), I would like to extend a heartfelt welcome to the ABRCMS 2020: The Virtual Experience. Due to the COVID-19 pandemic, ABRCMS is happening in your own spaces this year. While ABRCMS has been evolving since the first meeting in 2001, this year has placed the largest constraints on our evolution. As we face the COVID-19 pandemic, the protests against systemic racism, the suspension of in-person summer research programs (among other events), and the need to conduct our work largely virtually, all of these factors has placed a major strain on all of us. These events have clearly made the case for the importance of science, and that it should include all voices, which is why ABRCMS exists. I continue to be heartened and extremely proud that ABRCMS continues its very strong traditions of investment in diversity and inclusion with excellence in STEM.

Our long history and efforts to continue to diversify STEM, and the fact that we have been particularly challenged this year, led to the theme of this year's meeting, "Visualizing a better Future in STEM." ABRCMS is extremely proud of the role that we play in preparing Black, Indigenous, Hispanic/Latinx, and other underrepresented students for a career in STEM research. This meeting may be your first ABRCMS, or may be your 10th; nonetheless, we want it to be THE place where you feel you belong in STEM, and for it to be a continued part of your professional lives. We have been inspiring future leaders at this meeting, and as we continue our work to diversify the STEM research workforce, we want to continue to inspire even more. The COVID-19 pandemic and the devastating impact it has had on Black, Indigenous and Hispanic/Latinx communities, make it even more clear that only with a diverse scientific workforce can we hope to make strides and advances in issues such as health disparities, which has disproportionate impact on our communities. Addressing these and other issues will continue to require the breakthroughs that come from our communities. A more diverse workforce, with our current and our future leaders playing prominent roles, will accomplish this.

Given the challenges of the pandemic and online fatigue that we all face, we have assembled a smaller, but outstanding virtual program that will inspire, challenge and educate. For the future leaders of STEM attending, this is your chance to showcase your talent. I encourage you to take advantage of all that we have prepared for you. For the faculty mentors and advisors, this is your chance to demonstrate our inclusiveness and spirit of belonging that we strive to achieve at ABRCMS. We look forward to the exciting science from our community, the inspiring words of the presenters, and the engaging conversations with the exhibitors. At ABRCMS, we expect networking, the most cutting edge advances in the biomedical and behavioral sciences, and discussions of some of the most important issues facing minority students, as well as professionals as they impact our community. Moreover, while we are doing it safely and virtually, we expect no less in this year's virtual meeting.

Going from an in-person to a fully virtual meeting for the first time takes a lot of hard work, planning and preparation by the ABRCMS Steering Committee, the ASM staff, the exhibitors, and many volunteers, who have done a remarkable job to make this meeting possible. They have invested their time and efforts towards the scientific program, evaluating abstracts, manning the virtual booths and making sure that everything is just right, so that you can experience what I know will be one of the most rewarding meetings of your careers. I would like to thank them all in advance for all their hard work making this unique meeting a success. Finally, we are eternally grateful for the continued support of Division of Training, Workforce Development, and Diversity at the National Institute of General Medical Sciences, NIH, whose funding has continued to make ABRCMS what it is.

With my warmest wishes,

Avery August, Ph.D.

Avery August, Ph.D.

Chairperson, ABRCMS

Conference Welcome

On behalf of the National Institutes of Health's National Institute of General Medical Sciences (NIGMS), we'd like to welcome you to the 2020 Annual Biomedical Research Conference for Minority Students. We're very proud to support this meeting, which brings together a community of outstanding students and scientists for stimulating discussions of research, careers, and more.



This meeting is one element of our many activities in the areas of training, workforce development, diversity, and research capacity building. Our NIGMS programs range from the high school level through the undergraduate, graduate, postdoctoral and faculty levels. For example, we support an array of programs to enhance diversity in the biomedical research workforce including Science Education Partnership Awards, Bridges to the Baccalaureate, Building Infrastructure Leading to Diversity, Maximizing Access to Research Careers, Research Training Initiative for Scientific Enhancement, Initiative for Maximizing Student Development, Postbaccalaureate Research Education, Bridges to the Doctorate, Institutional Research and Academic Career Development Awards, Maximizing Opportunities for Scientific and Academic Independent Careers, the Diversity Supplement Program, the Native American Research Centers for Health, the Support of Competitive Research Programs, and the National Research Mentoring Network.

For those of you who are joining as mentors and sponsors, we truly appreciate your dedication and many contributions to your students and our shared goals. For those of you still in training, we hope that your involvement in this meeting further inspires and motivates you to pursue careers in the biomedical research workforce and leadership roles in biomedical science. During the meeting, you will gain important allies for your future: a community of peers who will become your colleagues and friends as well as a network of scientists and mentors who are deeply committed to your success in pursuit of a biomedical research career.

We encourage you to make the most of the meeting and take every advantage of the resources and opportunities it offers to help you prepare for the next stages of your research career. We look forward to seeing your presentations and talking to you over the course of the next few days.

Sincerely,

Jon R. Lorsch, Ph.D.

Director

National Institute of General Medical Sciences National Institutes of Health

Alison Gammie, Ph.D.

Director

Division of Training, Workforce Development, and Diversity National Institute of General Medical Sciences
National Institutes of Health

Schedule at a Glance

MONDAY, NOVEMBER 9

12:00 p.m. - 1:00 p.m.	Welcome Remarks and Opening Keynote
1:10 p.m. - 1:55 p.m.	Concurrent Professional Development Sessions
1:55 p.m. - 2:05 p.m.	Break
2:05 p.m. - 2:40 p.m.	Concurrent Oral Presentations (I)
2:45 p.m. - 3:15 p.m.	Live Chat/Networking by Discipline
3:15 p.m. - 3:25 p.m.	Break
3:25 p.m. - 4:10 p.m.	Plenary Scientific Session
4:20 p.m. - 5:30 p.m.	Exhibitor Spotlight (I)
5:30 p.m. - 5:45 p.m.	Break
5:45 p.m. - 7:00 p.m.	Virtual Exhibit Hall Live Chat

TUESDAY, NOVEMBER 10

12:00 p.m. - 1:15 p.m.	Plenary Scientific Session
1:25 p.m. - 1:55 p.m.	Concurrent Scientific Sessions
1:55 p.m. - 2:05 p.m.	Break
2:05 p.m. - 2:40 p.m.	Concurrent Oral Presentations (II)
2:45 p.m. - 3:15 p.m.	Live Chat by Special Interest Topic
3:15 p.m. - 3:25 p.m.	Break
3:25 p.m. - 4:10 p.m.	Concurrent Professional Development Sessions
4:20 p.m. - 5:30 p.m.	Exhibitor Spotlight (II)
5:30 p.m. - 5:45 p.m.	Break
5:45 p.m. - 7:00 p.m.	Virtual Exhibit Hall Live Chat

WEDNESDAY, NOVEMBER 11

12:00 p.m. - 12:45 p.m.	Concurrent Professional Development Sessions
12:55 p.m. - 1:55 p.m.	Plenary Session
1:55 p.m. - 2:05 p.m.	Break
2:05 p.m. - 2:40 p.m.	Concurrent Oral Presentations (III)
2:45 p.m. - 3:15 p.m.	Live Chat by Career Track
3:15 p.m. - 3:25 p.m.	Break

3:25 p.m. - 4:10 p.m.	Concurrent Professional Development Sessions
4:20 p.m. - 5:30 p.m.	Exhibitor Spotlight (III)
5:30 p.m. - 5:45 p.m.	Break
5:45 p.m. - 7:00 p.m.	Virtual Exhibit Hall Live Chat

THURSDAY, NOVEMBER 12

12:00 p.m. - 12:45 p.m.	Concurrent Professional Development Sessions
12:55 p.m. - 1:55 p.m.	Concurrent Oral Presentation (IV)
1:55 p.m. - 2:05 p.m.	Break
2:05 p.m. - 2:40 p.m.	Concurrent Oral Presentations (V)
2:40 p.m. - 2:50 p.m.	Break
2:50 p.m. - 3:45 p.m.	Live Chat by Special Interest Topic
4:00 p.m. - 4:35 p.m.	Concurrent Oral Presentations (VI)
4:45 p.m. - 5:30 p.m.	Exhibitor Spotlight (IV)
5:30 p.m. - 5:45 p.m.	Break
5:45 p.m. - 7:00 p.m.	Virtual Exhibit Hall Live Chat

FRIDAY, NOVEMBER 13

12:00 p.m. - 12:45 p.m.	Concurrent Professional Development Sessions
12:55 p.m. - 1:25 p.m.	Concurrent Scientific Sessions
1:25 p.m. - 1:35 p.m.	Break
1:35 p.m. - 2:45 p.m.	Exhibitor Spotlight (V)
3:00 p.m. - 3:35 p.m.	Exhibitor Spotlight (VI)
3:35 p.m. - 3:45 p.m.	Break
3:45 p.m. - 4:25 p.m.	Career Pathway Spotlight
4:30 p.m. - 5:15 p.m.	Presentation Awards and Closing Remarks

STEERING COMMITTEE



Avery August, Ph.D., Chairperson
Cornell University, College of Veterinary
Medicine



Lisa Barnes, Ph.D.
Rush University



Squire Booker, Ph.D.
Penn State University



Cherrie Boyer, Ph.D.
University of California, San
Francisco



Arturo Casadevall, M.D., M.S., Ph.D.,
The Johns Hopkins University



Lydia Contreras, Ph.D.
University of Texas at Austin



Tracy Johnson, Ph.D.
University of California, Los Angeles



Beronda Montgomery, Ph.D.
Michigan State University



Juan S. Ramírez Lugo, Ph.D.
University of Puerto Rico, Rio Piedras



Mary Sanchez Lanier, Ph.D.
Washington State University



Crystal Watkins, M.D., Ph.D.
The Johns Hopkins University

SUBCOMMITTEES

Judges Training Ad Hoc Committee



Marlene de la Cruz, Ph.D.
University of California, Irvine



Bolaji Thomas, Ph.D.
Rochester Institute of Technology



Alfredo Torres, Ph.D.
University of Texas Medical Branch at
Galveston

Partnership Ad Hoc Committee



Cherié Butts, Ph.D.
Biogen, Inc.



Victoria McGovern, Ph.D.
Burroughs Wellcome Fund

Important Information

ABRCMS recognized the significant challenges COVID-19 has placed on the scientific & educational communities and are saddened that we cannot commence in-person. However, (this year) ABRCMS has transitioned to a virtual conference and has a dynamic, interactive, and engaging virtual experience just for YOU.

ABRCMS Code of Conduct. The Annual Biomedical Research Conference for Minority Students (“ABRCMS”), managed by the American Society for Microbiology (“ASM”), is one of the nation’s largest conferences for underrepresented students in STEM.

ASM prohibits and will not tolerate any form of harassment or bullying at its events, whether the event is in-person or virtual. For more information, visit: www.abrcms.org/coc.

ABRCMS Mobile App. Get the latest conference program, exhibitor information, live chat opportunities, Game Challenge, and much more at your fingertips with the ABRCMS Mobile App. Search for **ABRCMS 2020 Virtual Experience** in your app store.

Session Times. All session times are Eastern (EST).

Time Zone Conversions:

- Noon - 7:00 p.m. (EST)
- 11:00 a.m. - 6:00 p.m. (CST)
- 10:00 a.m. - 5:00 p.m. (MST)
- 9:00 a.m. - 4:00 p.m. (PST)

ADA Services. Pursuant to the Americans with Disabilities Act, if you require services or aids to participate fully in ABRCMS 2020: The Virtual Experience, please be sure to indicate this in the registration portal.

Photo Policy. In order to protect data shared during presentations, no photos nor screen shots may be taken of posters or scientific session slides at the ABRCMS 2020: The Virtual Experience conference.

Live Chats. Take this opportunity to join an INTERACTIVE and ENGAGING discussion on varied special interest topics and network with your peers.

ePosters. Check out the new ePoster feature, which will be available to all attendees from November 9 – 13, 2020, for the duration of the conference. Attendees will have access to all ePosters and a 5-minute audio file at any time on any device.

ePoster Scientific Disciplines

- EPBIO-001 – EPBIO-129: Biochemistry and Molecular Biology
- EPCAN-130 – EPCAN-192: Cancer Biology
- EPCEL-193 – EPCEL-237: Cell Biology
- EPCHE-238 – EPCHE-320: Chemistry
- EPCOM-321 – EPCOM-398: Computational and Systems Biology
- EPDEV-399 – EPDEV-467: Developmental Biology and Genetics
- EPENG-468 – EPENG-532: Engineering, Physics and Mathematics
- EPIMM-533 – EPIMM-573: Immunology
- EPMIC-574 – EPMIC-678: Microbiology
- EPNEU-679 – EPNEU-827: Neuroscience
- EPPHY-828 – EPPHY-895: Physiology and Pharmacology
- EPSOC-896 – EPSOC-1035: Social and Behavioral Sciences and Public Health

Concurrent Scientific Sessions. Scientific content will be shared with the STEM community by experts, who have a breadth of knowledge on emerging scientific concepts on the following dates/times:

- **Tuesday, November 9, from 1:25 p.m. - 1:55 p.m. (ET)**
- **Friday, November 13, from 12:55 p.m. - 1:25 p.m. (ET)**

Presentation Awards Ceremony. On **Friday, November 13 (4:30 p.m. - 5:15 p.m.)**, ABRCMS will highlight oral and poster awardees from the 12 STEM disciplines represented at the conference.

Conference Evaluation. We value your feedback. At the conclusion of the conference, please take a few minutes to complete the Conference Evaluation in the mobile app. Please know that every completed evaluation helps us improve future conferences.

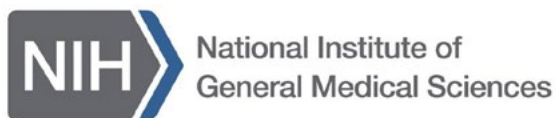


ABRCMS Tiered Sponsors

ABRCMS would like to recognize the following universities and organizations for their support of ABRCMS 2020: The Virtual Experience.

MAJOR CONFERENCE SPONSORS

Funded by



Managed by

**AMERICAN
SOCIETY FOR
MICROBIOLOGY**

PLATINUM SPONSORS

University of Alabama - Birmingham
Lawrence Livermore National Laboratory

GOLD SPONSOR

Merck & Co., Inc.

SILVER SPONSORS

Biogen, Inc.
Emory University
Novartis
Regeneron
University of South Florida

BRONZE SPONSORS

American University of the Caribbean
Columbia University Medical Center
Burroughs Wellcome Fund
Genentech
LSAMP - UIC Chicago
Merck KGaA
St. Jude's Children Research Hospital Graduate
School of Biomedical Sciences
Towson University
University of Massachusetts
University of Minnesota
Virginia Maryland College of Veterinary Medicine

Plenary Speakers

Monday, November 9 | 12:15 p.m. - 1:00 p.m.



Opening Keynote

Once I Was You: A Memoir of Love & Hate in a Torn America

Maria Hinojosa

Anchor and Executive Producer of Latino USA on National Public Radio

Monday, November 9 | 3:25 p.m. - 4:10 p.m.



Plenary Scientific Session

Molecular Mechanisms of Synaptic Assembly and Function: Lesson from *C. elegans*

Daniel Colón-Ramos, Ph.D.,

Yale University, New Haven, CT

Tuesday, November 10 | 12:00 p.m. - 1:15 p.m.



Plenary Scientific Session

Rapid Covid-19 Vaccine Development Enabled by Preparedness

Kizzmekia Corbett, Ph.D., *National Institute of Allergy and Infectious Diseases, NIH, Bethesda, MD*

Wednesday, November 11 | 12:55 p.m. - 1:15 p.m.



Plenary Session

Engaging in Productive Conversations about Race

Shaun Harper, Ph.D., *University of Southern California, Los Angeles, CA*

Concurrent Scientific Speakers

Tuesday, November 10 | 1:25 p.m. - 1:55 p.m.



Making the Shift for a Better Future: Centering the Role of Intersectionality in the Sciences

Hector Y. Adames, Ph.D.

The Chicago School of Professional Psychology, Chicago, IL



Gut Reactions: Exploring the Amazing Chemistry of the Human Microbiome

Emily Balskus, Ph.D.

Harvard University, Cambridge, MA



Machine Learning Methods for Predicting Genomic Variation

Mario Banuelos, Ph.D.

California State University, Fresno, Fresno, CA



Bridging the Gap between Innate and Learned Behaviors: A Parental Role in Promoting Survival

Bianca Jones Marlin, Ph.D.

Columbia University, New York City, NY

Friday, November 13 | 12:55 p.m. - 1:25 p.m.



Towards Personalized Articular Cartilage Engineered Tissues

Nehal Abu-Lail, Ph.D.

University of Texas at San Antonio, San Antonio, TX



Mitochondrial Networking in Times of Integrated Stress

Antenor Hinton, Jr., Ph.D.

University of Iowa Carver College of Medicine, Iowa City, IA



Understanding Emerging Viruses

Kellie Jurado, Ph.D.

University of Pennsylvania, Philadelphia, PA



Ubiquitin in the Breaking and Making of Proteins during Stress

Gustavo Silva, Ph.D.

Duke University, Durham, NC

AIM HIGHER

Pursue your dream of a career in science

If you have an undergraduate degree and are passionate about scientific inquiry, consider graduation education.

The Coordinated Doctoral Programs in Biomedical Sciences at the Vagelos College of Physicians and Surgeons are part of Columbia University Graduate School of Arts and Sciences and are located at the Columbia University Irving Medical Center campus. The Medical Center is home to over 2,000 basic and clinical faculty and 3,000 students. In addition to the graduate school, this intellectual powerhouse incorporates schools of medicine, dentistry, nursing and public health. The campus also includes NewYork-Presbyterian Hospital, ranked within the top 10 in the nation. Columbia's diverse academic resources and proximity to other scientific institutions offer endless opportunities to attend data clubs, lectures and symposia, as well as to pursue research collaborations or learn new techniques.

We offer a range of nationally top-ranked PhD Programs. Regardless of program affiliation, students have access to our more than 250 training faculty when selecting their research direction, ensuring that each student receives optimal training and research experience. We also provide a supportive environment which goes beyond academics. We seek to foster a spirit of cooperation and communication rather than competitiveness amongst students and laboratories. We offer training in the following areas:

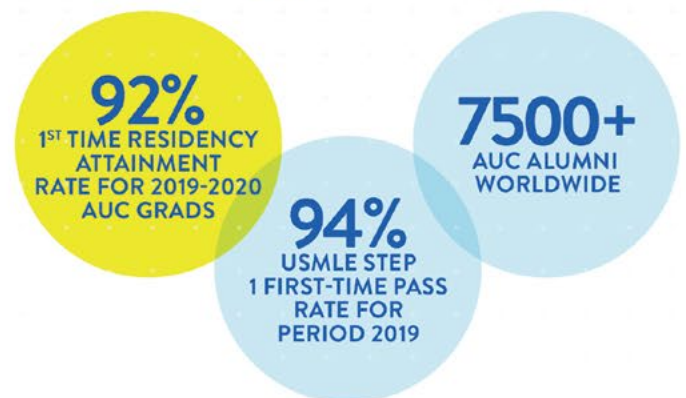
- *Biomedical Informatics*
- *Cellular, Molecular and Biomedical Studies*
- *Cellular and Molecular Physiology & Biophysics*
- *Genetics and Development*
- *Microbiology and Immunology*
- *Neurobiology and Behavior*
- *Nutritional and Metabolic Biology*
- *Pathobiology and Mechanisms of Disease*
- *Pharmacology and Molecular Signaling*
- *Systems Biology*

Full tuition, university fees, and generous stipend awarded to all qualified students. Columbia University in the City of New York provides a warm, supportive and accommodating environment for students with disabilities. For more information, visit us at:

<https://gsas.cuimc.columbia.edu>



American University of the Caribbean School of Medicine's internationally recognized MD Degree program offers a rigorous education model taught by expert faculty, and the eligibility to practice in the US, Canada & abroad. Visit our virtual booth to learn more about our small class sizes, team based learning culture, and our legacy of community engagement.



Visit AUCMED.EDU/get-started

© 2020 American University of the Caribbean School of Medicine. All rights reserved.

Visualizing a Better Future in STEM

Final Program

Noon - Midnight (EST)

ePosters & Virtual Exhibit Hall available daily

MONDAY, NOVEMBER 9

12:00 p.m. - 12:15 p.m.

Welcome Remarks

- **Alison Gammie, Ph.D.**, National Institute of General Medical Sciences, NIH, Bethesda, MD
- **Avery August, Ph.D.**, Cornell University, Ithaca, NY

OPENING KEYNOTE

12:15 p.m. - 1:00 p.m.

Once I Was You: A Memoir of Love & Hate in a Torn America

(Recommended for All Attendees)

MODERATOR

- **Lydia Contreras, Ph.D.**, University of Texas at Austin, Austin, TX

SPEAKER

- **Maria Hinojosa**, Anchor and Executive Producer of Latino USA on National Public Radio

CONCURRENT PROFESSIONAL DEVELOPMENT SESSIONS

SESSION 1

1:10 p.m. - 1:55 p.m.

The Ins and Outs of Graduate School Panel Discussion

(Recommended for Community College, Undergraduate, and Postbaccalaureate Students)

MODERATOR

- **Nicquet Blake, Ph.D.**, University of Texas Health Science Center San Antonio, San Antonio, TX

SPEAKERS

- Graduate Students Panel

SESSION 2

1:10 p.m. - 1:55 p.m.

Picking the Perfect Ph.D. Program for You: Why Choose a School with a T32?

(Recommended for students interested in the Ph.D. track)

SPEAKER

- **Sharon Milgram, Ph.D.**, National Institutes of Health, Bethesda, MD

SESSION 3

1:10 p.m. - 1:55 p.m.

How we Learn...How we Don't

(Recommended for Graduate Students, Postdoctoral Scientists, Nonstudents)

MODERATOR

- **Monique Mendes, Ph.D.**, Stanford University, Stanford, CA

SPEAKER

- **Robert Duke, Ph.D.**, University of Texas at Austin, Austin, TX

CONCURRENT ORAL PRESENTATIONS - I

SESSION 1

2:05 p.m. - 2:40 p.m.

*Disciplines: Biochemistry and Molecular Biology I
Computational and Systems Biology*

(Recommended for All Attendees)

MODERATOR

- **Charles Bevins, Ph.D.**, University of California, Davis, Davis, CA

PRESENTERS

- 2:05 p.m. - 2:15 p.m.
0-01 Mohamed Ahmed, Michigan State University
- 2:17 p.m. - 2:27 p.m.
0-02 Jacey Phillips, Rochester Institute of Technology
- 2:29 p.m. - 2:39 p.m.
0-03 Corinne Croslyn, University of Puerto Rico, Rio Piedras

SESSION 2**2:05 p.m. - 2:40 p.m.***Discipline: Cancer Biology*

(Recommended for All Attendees)

MODERATOR

- **Luisel Ricks-Santi, Ph.D.**, Hampton University, Hampton, VA

PRESENTERS

- **2:05 p.m. - 2:15 p.m.**
0-04 Yangjingyi Ruan, University of California, Los Angeles
- **2:17 p.m. - 2:27 p.m.**
- **0-05 Tenzing Dakpa**, Colgate University
- **2:29 p.m. - 2:39 p.m.**
0-06 Alejandra Flores, Massachusetts Institute of Technology

SESSION 3**2:05 p.m. - 2:40 p.m.***Discipline: Developmental Biology and Genetics*

(Recommended for All Attendees)

MODERATOR

- **Marlene de la Cruz, Ph.D.**, University of California, Irvine, Irvine, CA

PRESENTERS

- **2:05 p.m. - 2:15 p.m.**
0-07 Jackie McVay, Marquette University
- **2:17 p.m. - 2:27 p.m.**
0-08 Vada Becker, Northeastern Illinois University
- **2:29 p.m. - 2:39 p.m.**
0-09 Philip Nosler, University of Oregon

SESSION 4**2:05 p.m. - 2:40 p.m.***Discipline: Immunology*

(Recommended for All Attendees)

MODERATOR

- **Cherié Butts, Ph.D.**, Biogen, Cambridge, MA

PRESENTERS

- **2:05 p.m. - 2:15 p.m.**
0-10 Kasra Askari, La Jolla Institute for Immunology

- **2:17 p.m. - 2:27 p.m.**

0-11 Alma Zuniga Munoz, University of California, Los Angeles

- **2:29 p.m. - 2:39 p.m.**

0-12 Yuzuka Kanno, Research Institute for Biomedical Sciences, Tokyo University of Science

LIVE CHAT BY SCIENTIFIC DISCIPLINE**LIVE CHAT 1****2:45 p.m. - 3:15 p.m.***Discipline: Social and Behavioral Sciences and Public Health / Neuroscience*

(Recommended for All Attendees)

FACILITATORS

- **Michael Burton, Ph.D.**, University of Texas at Dallas, Dallas, TX
- **Karen Singer-Freeman, Ph.D.**, University of North Carolina at Charlotte, Charlotte, NC

LIVE CHAT 2**2:45 p.m. - 3:15 p.m.***Discipline: Microbiology / Immunology / Cell Biology / Physiology and Pharmacology*

(Recommended for All Attendees)

FACILITATORS

- **Brent Berwin, Ph.D.**, The Jackson Laboratory, Bar Harbor, ME
- **Amanda Marie James, Ph.D.**, Emory University, Atlanta, GA
- **Cleber Ouverney, Ph.D.**, San José State University, San Jose, California
- **Alfredo Torres, Ph.D.**, The University of Texas Medical Branch at Galveston, Galveston, TX



LIFE SCIENCES

GRADUATE AND
PROFESSIONAL PROGRAMS



YOU BELONG AT MIZZOU



What Are Your Interests? Talk To Us
bit.ly/MizzouGradPrograms
gradlifesci@missouri.edu

College of Veterinary Medicine



VET UP! The National HCOP Academy for Veterinary Medicine

Interested in a career in veterinary medicine?

Gain opportunities and support needed to enter this competitive field! Join the Purdue University College of Veterinary Medicine at the Virtual ABRCMS Exhibit Hall to learn about *Vet Up!* programs for U.S. high school and undergraduate students. Chat with us for more information about the programs, eligibility requirements, financial support, application process, and important dates.

Take the next small step in your career, together.
Because every giant leap starts with one small step.

www.PurdueVetUp.org

This program is supported by the Health Resources and Services Administration (HRSA) of the U.S. Department of Health and Human Services (HHS) as part of an award totaling \$3.18 million. The contents are those of the authors and do not necessarily represent the official views of, nor an endorsement, by HRSA, HHS, or the U.S. Government.

EA/EDU

LIVE CHAT 3**2:45 p.m. - 3:15 p.m.***Discipline: Engineering, Physics and Mathematics / Chemistry / Computational and Systems Biology*

(Recommended for All Attendees)

FACILITATORS

- **Squire Booker, Ph.D.**, Penn State University, Centre County, PA
- **Dana Crawford Ph.D.**, Case Western Reserve University, Cleveland, OH
- **Abiraman Srinivasan, Ph.D.**, Community College of Allegheny County, Pittsburgh, PA

LIVE CHAT 4**2:45 p.m. - 3:15 p.m.***Discipline: Cancer Biology / Developmental Biology & Genetics / Biochemistry and Molecular Biology*

(Recommended for All Attendees)

FACILITATORS

- **Candice M. Etson, Ph.D.**, Wesleyan University, Middletown, CT
- **Marlene de la Cruz, Ph.D.**, University of California, Irvine, Irvine, CA
- **Manu Platt, Ph.D.**, Georgia Institute of Technology, Atlanta, GA

PLENARY SCIENTIFIC SESSION**3:25 p.m. - 4:10 p.m.****Molecular Mechanisms of Synaptic Assembly and Function: Lesson from *C. elegans***

(Recommended for All Attendees)

MODERATOR

- **Victoria McGovern, Ph.D.**, Burroughs Wellcome Fund, Research Triangle, NC

SPEAKER

- **Daniel Colón-Ramos, Ph.D.**, Yale University, New Haven, CT

EXHIBITOR SPOTLIGHT - I**4:20 p.m. - 5:30 p.m.****Exhibitor Spotlights with Q&A**

(Recommended for All Attendees)

MODERATOR

- **Tiffani Fonseca, M.B.A.**, American Society for Microbiology, Washington, DC

4:20 p.m. - 4:30 p.m.*Morehouse College***SPEAKER**

- **Chelsea Bradshaw, M.P.H.**, Program Coordinator, Public Health Sciences Institute, Morehouse College, Atlanta, GA

4:32 p.m. - 4:42 p.m.*Carnegie Mellon University***SPEAKER**

- **Marlene Behrmann, Ph.D.**, University Professor of Psychology and Neuroscience Institute, Carnegie Mellon University, Pittsburgh, PA

4:44 p.m. - 4:54 p.m.*University of North Carolina at Chapel Hill - Biomedical PhD/MD- PhD/PharmSci Ph.D***SPEAKER**

- **Joshua Hall, Ph.D.**, Director of Admissions for the Biological and Biomedical Sciences Program (BBSP) and Director of the Post-baccalaureate Research Education Program (PREP), University of North Carolina at Chapel Hill, Chapel Hill, NC

4:56 p.m. - 5:06 p.m.*University of Virginia - EXPAND Graduate Training Program***SPEAKERS**

- **Jessica Connelly, Ph.D.**, Associate Professor of Psychology, University of Virginia, Charlottesville, VA
- **Robert Cox, Ph.D.**, Associate Professor of Biology, University of Virginia, Charlottesville, VA

5:08 p.m. - 5:18 p.m.

Alabama College of Osteopathic Medicine

SPEAKER

- **Linda Goodson, R.N.**, Director of Admissions, Alabama College of Osteopathic Medicine, Dothan, AL

5:20 p.m. - 5:30 p.m.

Exhibitor Spotlight - I (Q&A Session)

5:45 p.m. - 7:00 p.m.

Virtual Exhibit Hall Live Chat

(Recommended for All Attendees)

TUESDAY, NOVEMBER 10

PLENARY SCIENTIFIC SESSION

12:00 noon - 1:15 p.m.

Rapid Covid-19 Vaccine Development Enabled by Preparedness

(Recommended for All Attendees)

MODERATOR

- **Avery August, Ph.D.**, Cornell University, College of Veterinary Medicine, Ithaca, NY

SPEAKER

- **Kizzmekia Corbett, Ph.D.**, National Institute of Allergy and Infectious Diseases, NIH, Bethesda, MD

CONCURRENT SCIENTIFIC SESSIONS

SESSION 1

1:25 p.m. - 1:55 p.m.

Making the Shift for a Better Future: Centering the Role of Intersectionality in the Sciences

(Recommended for All Attendees)

MODERATOR

- **Jack Simons, Ph.D.**, Mercy College, Dobbs Ferry, NY

SPEAKER

- **Hector Y. Adames, Ph.D.**, The Chicago School of Professional Psychology, Chicago, IL

16 **Visualizing a Better Future in STEM**

SESSION 2

1:25 p.m. - 1:55 p.m.

Gut Reactions: Exploring the Amazing Chemistry of the Human Microbiome

(Recommended for All Attendees)

MODERATOR

- **Squire Booker, Ph.D.**, Penn State University, Centre County, PA

SPEAKER

- **Emily Balskus, Ph.D.**, Harvard University, Cambridge, MA

SESSION 3

1:25 p.m. - 1:55 p.m.

Machine Learning Methods for Predicting Genomic Variation

(Recommended for All Attendees)

MODERATOR

- **Lydia Contreras, Ph.D.**, University of Texas at Austin, Austin, TX

SPEAKER

- **Mario Banuelos, Ph.D.**, California State University, Fresno, Fresno, CA

SESSION 4

1:25 p.m. - 1:55 p.m.

Bridging the Gap between Innate and Learned Behaviors: A Parental Role in Promoting Survival

(Recommended for All Attendees)

MODERATOR

- **Monique Mendes, Ph.D.**, Stanford University, Stanford, CA

SPEAKER

- **Bianca Jones Marlin, Ph.D.**, Columbia University, New York City, NY

LOUIS STOKES ALLIANCE FOR MINORITY PARTICIPATION - NSF International Center of Excellence (LSAMP-NICE)

Created in 2018, the Louis Stokes Regional NSF International Center of Excellence (LSAMP- NICE) is specifically charged with broadening underrepresented student participation in international collaborative research.

A COLLABORATIVE



Salish Kootenai College
Pablo, MT
Jackson State University
Jackson, MS
The Louisiana State University
Baton Rouge, LA
University of Illinois at Chicago
Chicago, IL

LSAMP-NICE

An exhibit of partnership and global scientific research collaboration potential

Students: Discover opportunities to participate in international collaborative research

Faculty: Explore international research collaboration with scientists across the globe through LSAMP-NICE faculty awards

International and Domestic Institutions and

Labs: Consider LSAMP community networking potential with access to highly qualified LSAMP undergraduate and graduate student scientists

Global Partners

Brazil
Costa Rica
France
Universities of Bordeaux and Toulouse
Panama
Saudi Arabia
King Abdullah University
of Science and Technology (KAUST)
South Africa
National Research Foundation (NRF)

Join us for the

ABRCMS

Exhibitor Spotlight IV

**Thursday November 12
4:45pm to 5:30pm**

Please visit the ABRCMS Exhibit Hall during the conference or contact us directly for more information:

Dr. Steven Dupuis, PI
steve_dupuis@skc.edu

Dr. Martha Tchounwou, co-PI
martha.n.tchounwou@jsums.edu

Dr. Zakiya Wison-Kennedy, co-PI
zwilson@lsu.edu

Denise Yates, co-PI
dyates@uic.edu

<http://lsamp-nice.org>



LSAMP-NICE is funded by the National Science Foundation Grant 1826824



Innovation starts with our own curiosity and courage to ask new questions, to head into the unknown and to work within a diverse community. Our education & training programs provide opportunities for talented students and post-doctoral fellows to contribute to the search for medical breakthroughs. Visit our booth to learn more about Novartis and our programs.

CONCURRENT ORAL PRESENTATIONS – II

SESSION 1

2:05 p.m. - 2:40 p.m.

Discipline: Chemistry

(Recommended for All Attendees)

MODERATOR

- **Squire Booker, Ph.D.**, Penn State University, Centre County, PA

PRESENTERS

- 2:05 p.m. - 2:15 p.m.
0-13 Alejandra Acevedo M., Portland State University
- 2:17 p.m. - 2:27 p.m.
0-14 Jessica Battle, Webster University
- 2:29 p.m. - 2:39 p.m.
0-15 David Sanchez-Rodriguez, Inter American University of Puerto Rico, Ponce Campus

SESSION 2

2:05 p.m. - 2:40 p.m.

Discipline: Engineering, Physics and Mathematics

(Recommended for All Attendees)

MODERATOR

- **Angela Alexander-Bryant, Ph.D.**, Clemson University, Clemson, SC

PRESENTERS

- 2:05 p.m. - 2:15 p.m.
0-16 Alan Hurtado, University of California, San Diego
- 2:17 p.m. - 2:27 p.m.
0-17 Stephany Alonso, University of California, Irvine

- 2:29 p.m. - 2:39 p.m.

0-18 Isabelle Linares, University at Buffalo, SUNY

SESSION 3

2:05 p.m. - 2:40 p.m.

Discipline: Neuroscience

(Recommended for All Attendees)

MODERATOR

- **Ramesh Raghupathi, Ph.D.**, Drexel University, Philadelphia, PA

PRESENTERS

- 2:05 p.m. - 2:15 p.m.
0-19 Srbui Azarapetian, University of California, Los Angeles
- 2:17 p.m. - 2:27 p.m.
0-20 Naya Ibrahim, University of Arizona
- 2:29 p.m. - 2:39 p.m.
0-21 Vernon Kennedy, College of Charleston

SESSION 4

2:05 p.m. - 2:40 p.m.

Discipline: Social and Behavioral Sciences and Public Health

(Recommended for All Attendees)

MODERATOR

- **Cherrie Boyer, Ph.D.**, University of California, San Francisco, San Francisco, CA

PRESENTERS

- 2:05 p.m. - 2:15 p.m.
0-22 Keren Herrán, University of Maryland, Baltimore County
- 2:17 p.m. - 2:27 p.m.
0-23 Casadora Boone, University of California, Irvine
- 2:29 p.m. - 2:39 p.m.
0-24 Dorothy Liu, Memorial Sloan Kettering Cancer Center



LIVE CHAT BY CAREER TRACK

SESSION 1

2:45 p.m. - 3:15 p.m.

Track: Government

(Recommended for All Attendees)

FACILITATOR

- **Edgardo Falcón-Morales, Ph.D.**, National Institute of General Medical Sciences, Bethesda, MD

SESSION 2

2:45 p.m. - 3:15 p.m.

Track: Industry

This session is co-sponsored by Biogen, Inc. and Alliance for Regenerative Medicine.

(Recommended for All Attendees)

FACILITATORS

- **Cherié Butts, Ph.D.**, Biogen, Cambridge, MA
- **Francesca Cook, M.P.H.**, Senior Director, Regenxbio, Rockville, MD

SESSION 3

2:45 p.m. - 3:15 p.m.

Track: Entrepreneurship

(Recommended for All Attendees)

FACILITATOR

- **Tshaka Cunningham, Ph.D.**, TruGenomix, Inc., Rockville, MD

CONCURRENT PROFESSIONAL DEVELOPMENT SESSIONS

SESSION 1

3:25 p.m. - 4:10 p.m.

Goal Setting and Time Management

(Recommended for Community College, Undergraduate, and Postbaccalaureate Students)

MODERATOR

- **Janice Reynaga, Ph.D. Candidate**, University of Pennsylvania, Philadelphia, PA

SPEAKER

- **Sandra A. Murray, Ph.D.**, University of Pittsburgh, Pittsburgh, PA

SESSION 2

3:25 p.m. - 4:10 p.m.

Training for a Career as a Physician Scientist (MD-PhD)

(Recommended for Community College, Undergraduate, and Postbaccalaureate Students)

SPEAKERS

- **Myles Akabas, M.D., Ph.D.**, Albert Einstein College of Medicine of Yeshiva University, Bronx, NY
- **Lawrence Brass, M.D., Ph.D.**, University of Pennsylvania, Philadelphia, PA

SESSION 3

3:25 p.m. - 4:10 p.m.

Diversifying the Scientific Workforce: Progress at the National Institutes of Health & Next Steps

(Recommended for Graduate Students and Postdoctoral Scientists)

SPEAKERS

- **Ofelia Olivero, Ph.D.**, National Cancer Institute, NIH, Bethesda, MD
- **Lyl Tomlinson, Ph.D.**, National Institutes of Health, Bethesda, MD

SESSION 4

3:25 p.m. - 4:10 p.m.

An Introduction to National Institutes of Health Undergraduate and Predoctoral Grant Programs

(Recommended for Nonstudents)

SPEAKERS

- **Anissa Brown, Ph.D.**, National Institute of General Medical Sciences, NIH, Bethesda, MD
- **Luis Cubano, PhD**, National Human Genome Research Institute, NIH, Bethesda, MD
- **John Laffan, Ph.D.**, National Institute of General Medical Sciences, NIH, Bethesda, MD

#1 YOUNG U.S. UNIVERSITY

2ND CONSECUTIVE YEAR
—TIMES HIGHER EDUCATION



Become part of our unique and select group of students training to become tomorrow's leaders in science and medicine

Visit us at www.uab.edu/graduate and www.uab.edu/medicine

#UABUNITED



THE UNIVERSITY OF ALABAMA AT BIRMINGHAM.

In 1969, the University of Alabama at Birmingham was born

An independent institution rooted in the Magic City, created from the union of a university extension center and a pioneering academic medical center. Since then, UAB has saved lives, solved problems, expanded knowledge, and opened doors.

Our ideas and innovations have energized our community and transformed UAB into a institution for anyone ready to change the world.

www.uab.edu

*"Inspiring minds **TODAY** to Transform **TOMORROW**"*



Bridges to the Doctorate

Scholars will complete their Master of Science degree in a laboratory at Towson University and ultimately enroll in a doctoral program.

Eligibility:

- Blacks or African Americans
- Hispanics or Latinx
- American Indians or Alaska Natives
- Native Americans
- Disabled

Benefits:

- Tuition waiver
- Salary
- Mentorship
- GRE-Prep
- Funding to travel to research conferences



TO APPLY

<https://www.towson.edu/fcsm/departments/stem/bridges/doctorate/application.html>

DEADLINES

Early Admission: January 10th

Final Deadline: March 20th

CONTACT US

Dr. Elana Ehrlich & Dr. Michelle Snyder

bridges2doc@towson.edu



@bridges_towson

@bridges.towson

EXHIBITOR SPOTLIGHT - II

MODERATOR

- **Christopher Skipwith, Ph.D.**, American Society for Microbiology, Washington, DC

4:20 p.m. - 4:30 p.m.

Albert Einstein College of Medicine, Graduate Programs in the Biomedical Sciences

SPEAKER

- **Victoria H. Freedman, Ph.D.**, Associate Dean for Graduate Programs, Albert Einstein College of Medicine, Bronx, NY

4:32 p.m. - 4:42 p.m.

Gilead Sciences

SPEAKER

- **Larrishia J. Stanley, M.S.**, Director of Early Talent & University Relations, Gilead Sciences, Foster City, CA

4:44 p.m. - 4:54 p.m.

Vet Up! Program at Purdue College of Veterinary Medicine

SPEAKER

- **Latonia Craig, Ed.D.**, Assistant Dean for Inclusive Excellence, Purdue College of Veterinary Medicine, West Lafayette, IN

4:56 p.m. - 5:06 p.m.

St. Jude Children's Research Hospital Graduate School of Biomedical Sciences

SPEAKER

- **J. Racquel Collins, MT (ASCP), M.B.A., Ph.D.**, Assistant Dean, St. Jude Children's Research Hospital Graduate School of Biomedical Sciences, Memphis, TN

5:08 p.m. - 5:18 p.m.

D.E. Shaw Research

SPEAKER

- **Aashima Jhingan, B.S.**, Strategic Growth Associate, D. E. Shaw Research, New York, NY

5:20 p.m. - 5:30 p.m.

Exhibitor Spotlight - II (Q&A Session)

5:45 p.m. - 7:00 p.m.

Virtual Exhibit Hall Live Chat

(Recommended for All Attendees)

WEDNESDAY, NOVEMBER 11

CONCURRENT PROFESSIONAL DEVELOPMENT SESSIONS

SESSION 1

12:00 p.m. - 12:45 p.m.

ACING the Graduate Application Process: Create an Outstanding Personal Statement and Excel at your Graduate School Interview to Showcase YOU!

(Recommended for Community College, Undergraduate, and Postbaccalaureate Students)

SPEAKERS

- **Sherilynn Black, Ph.D.**, Duke University, Durham, NC
- **Nicquet Blake, Ph.D.**, University of Texas Health Science Center San Antonio, San Antonio, TX
- **Victoria Freedman, Ph.D.**, Albert Einstein College of Medicine, Bronx, NY
- **Nancy Schwartz, Ph.D.**, University of Chicago, Chicago, IL
- **Nancy Street, Ph.D.**, University of Texas Southwestern Medical Center, Dallas, TX



ABOUT THE BROAD INSTITUTE

The Broad Institute of MIT and Harvard is a non-profit, independent research institute and a global leader in genomics and biomedicine. A deeply collaborative community, the Broad brings together more than 300 faculty and more than 1,500 researchers from across MIT, Harvard and Harvard-affiliated hospitals, working together to solve critical problems in biomedicine.

Opportunities for summer research, post-baccalaureate and post-doctoral training, and scientific careers

Kedar Perkins participated in the Broad Summer Research Program (BSRP) in 2012. B.S. Chemistry, University of Maryland; Ph.D. Polymer Chemistry, Carnegie Mellon University.

www.broadinstitute.org



EMD
SERONO

MILLIPORE
SIGMA

EMD
PERFORMANCE
MATERIALS

The businesses of Merck KGaA, Darmstadt, Germany operate as EMD Serono, MilliporeSigma and EMD Performance Materials in the U.S. and Canada.

Merck KGaA, Darmstadt, Germany is an equal opportunity employer.

Leaders of Color ACTION NETWORK

We are a vibrant science and technology company.

We employ unique and curious minds who believe that science is a force for good.

Through our three businesses we make a positive difference to millions of peoples' lives every day.

Curious to find out more?
jobs.vibrantm.com



© 2020 Merck KGaA, Darmstadt, Germany. All rights reserved. EMD Serono, MilliporeSigma, and EMD Performance Materials are trademarks of Merck KGaA, Darmstadt, Germany. All other trademarks are the property of their respective owners.

SESSION 2

12:00 p.m. - 12:45 p.m.

Post Baccalaureate Programs, Tips for Submitting a Successful Application, and Advice on Taking a Gap Year

(Recommended for Community College, Undergraduate, and Postbaccalaureate Students)

SPEAKERS

- **Erika L. Barr, Ph.D.**, National Institutes of Health, Bethesda, MD
- **Tameka Clemons, Ph.D.**, Meharry Medical College, Nashville, TN
- **Kimberly Williams, Ph.D.**, Spelman College, Atlanta, GA

SESSION 3

12:00 p.m. - 12:45 p.m.

Unique Funding Opportunities for Early Career Stage Scientists from the National Institutes of Health

(Recommended for Graduate Students and Postdoctoral Scientists)

SPEAKERS

- **Ravi Basavappa, Ph.D.**, National Institutes of Health, Bethesda, MD
- **Oliver Bogler, Ph.D.**, National Cancer Institute, NIH, Bethesda, MD
- **Timothy Gondré-Lewis, Ph.D.**, National Institute of Allergy and Infectious Diseases, NIH, Bethesda, MD

SESSION 4

12:00 p.m. - 12:45 p.m.

A Path Beyond Restoration, Toward Transformative Justice in an Institution

(Recommended for Nonstudents)

MODERATOR

- **Alfredo Torres, Ph.D.**, University of Texas Medical Branch, Galveston, TX

SPEAKER

- **Renetta Garrison Tull, Ph.D.**, University of California, Davis, Davis, CA

PLENARY SESSION

12:55 p.m. - 1:55 p.m.

Engaging in Productive Conversations About Race

(Recommended for All Attendees)

MODERATOR

- **Beronda Montgomery, Ph.D.**, Michigan State University, East Lansing, MI

SPEAKER

- **Shaun Harper, Ph.D.**, University of Southern California, Los Angeles, CA

CONCURRENT ORAL PRESENTATIONS - III**SESSION 1**

2:05 p.m. - 2:40 p.m.

Discipline: Biochemistry and Molecular Biology / Chemistry

(Recommended for All Attendees)

MODERATOR

- **Gustavo Silva, Ph.D.**, Duke University, Durham, NC

PRESENTERS

- 2:05 p.m. - 2:15 p.m.
0-25 Kobe Abney, University of Pennsylvania
- 2:17 p.m. - 2:27 p.m.
0-26 Kayla Ortiz, Vanderbilt University
- 2:29 p.m. - 2:39 p.m.
0-27 Chris La, University of California, Los Angeles





Where Opportunity and Inclusive Excellence Converge: Preparing the Next Generation of Leaders in Biomedical Research

WWW.USF.EDU

TRI-INSTITUTIONAL PHD PROGRAMS

TRAIN at exceptional scientific institutions **BECOME** a scientific leaders at the forefront of your field **LIVE** in diverse and exciting New York City



Cornell University



Weill Cornell Medical College



THE ROCKEFELLER UNIVERSITY



Memorial Sloan Kettering
Cancer Center



**Chemical
Biology**

chembio.triiprograms.org

...research & training at the interface of chemistry and biology

**Computational
Biology & Medicine**

compbio.triiprograms.org

...program at forefront of computational biology & biomedical research

promoting diversity and inclusion in science

SESSION 2**2:05 p.m. - 2:40 p.m.***Discipline: Cancer Biology / Physiology and Pharmacology*
(Recommended for All Attendees)**MODERATOR**

- **Amanda Marie James, Ph.D.**, Emory University, Atlanta, GA

PRESENTERS

- **2:05 p.m. - 2:15 p.m.**
0-29 Benjamin Nieves, University of Puerto Rico Rio Piedras Campus
- **2:17 p.m. - 2:27 p.m.**
0-30 Dante Goss, Indiana University-Purdue University Indianapolis
- **2:29 p.m. - 2:39 p.m.**
0-31 Danying Guan, Memorial Sloan Kettering Cancer Center

SESSION 3**2:05 p.m. - 2:40 p.m.***Discipline: Computational and Systems Biology*
(Recommended for All Attendees)**MODERATOR**

- **Jeanette Papp, Ph.D.**, University of California, Los Angeles, Los Angeles, CA

PRESENTERS

- **2:05 p.m. - 2:15 p.m.**
0-31 Lusmeralis Almodovar Abreu, University of Puerto Rico
- **2:17 p.m. - 2:27 p.m.**
0-32 Nathan Siu, University of California, Los Angeles
- **2:29 p.m. - 2:39 p.m.**
0-33 Luis Escalante, University of California, Irvine

SESSION 4**2:05 p.m. - 2:40 p.m.***Discipline: Social and Behavioral Sciences and Public Health*
(Recommended for All Attendees)**MODERATOR**

- **Cherrie Boyer Ph.D.**, University of California, San Francisco, San Francisco, CA

PRESENTERS

- **2:05 p.m. - 2:15 p.m.**
0-34 Pooja Suganthan, Memorial Sloan Kettering Cancer Center
- **2:17 p.m. - 2:27 p.m.**
0-35 Steven Montalvo, University of Wisconsin-Madison
- **2:29 p.m. - 2:39 p.m.**
0-36 Jessica Gjonaj, Feinstein Institute for Medical Research at Northwell Health

LIVE CHAT BY SPECIAL INTEREST TOPICS**LIVE CHAT 1****2:45 p.m. - 3:15 p.m.****How to Successfully Navigate Your Gap Year**

(Recommended for Community College, Undergraduate, and Postbaccalaureate Students)

FACILITATORS

- **Tameka Clemons, Ph.D.**, Meharry Medical College, Nashville, TN
- **Kimberly Williams, Ph.D.**, Spelman College, Atlanta, GA



LIVE CHAT 2

2:45 p.m. - 3:15 p.m.

NIGMS Program Opportunities for Postdoctoral Training and Early-Stage Faculty

(Recommended for Graduate Students and Postdoctoral Scientists)

FACILITATOR

- **Michael Sesma, Ph.D.**, National Institute of General Medical Services, NIH, Bethesda, MD

LIVE CHAT 3

2:45 p.m. - 3:15 p.m.

LGBTQIA+ Network & Tips on Succeeding as a Scientist

(Recommended for All Attendees)

FACILITATOR

- **Sharon Milgram, Ph.D.**, National Institutes of Health, Bethesda, MD

CONCURRENT PROFESSIONAL DEVELOPMENT SESSIONS

SESSION 1

3:25 p.m. - 4:10 p.m.

You are NOT your Disability

(Recommended for Community College, Undergraduate, and Postbaccalaureate Students)

SPEAKER

Stephen Klusza, Ph.D., Clayton State University, Morrow, GA

SESSION 2

3:25 p.m. - 4:10 p.m.

Bias and the Brain: Addressing Microaggressions and Changing Culture

(Recommended for All Attendees)

SPEAKERS

- **AZA Stephen Allsop, M.D., Ph.D.**, Yale University, New Haven, CT
- **Bruce Birren, Ph.D.**, The Broad Institute, Cambridge, MA

SESSION 3

3:25 p.m. - 4:10 p.m.

Where are my Students? Where is my Instructor? Creating a Successful Online Learning Environment

(Recommended for Nonstudents)

MODERATOR

- **Maricarmen Rojas-López, Ph.D.**, Harvard Medical School, Boston, MA

SPEAKER

- **Loretta Brancaccio-Taras, Ph.D.**, Kingsborough Community College, Brooklyn, NY

EXHIBITOR SPOTLIGHT - III

4:20 p.m. - 5:30 p.m.

Exhibitor Spotlights with Q&A

(Recommended for All Attendees)

MODERATOR

- **Tiffani Fonseca, M.B.A.**, American Society for Microbiology, Washington, DC

4:20 p.m. - 4:30 p.m.

University of Miami-Miller School of Medicine

SPEAKER

- **David J. Lee, Ph.D.**, Interim Chair, Department of Public Health Science, Director of Graduate Programs, University of Miami, Miller School of Medicine



4:32 p.m. - 4:42 p.m.

University of Alabama at Birmingham

SPEAKERS

- **Randy Seay, M.A., M.P.A., M.P.H.**, Associate Director, University of Alabama at Birmingham, Birmingham, AL
- **Stefanie Varghese, Ph.D.**, Manager of the School of Optometry Vision Science Graduate Program, University of Alabama at Birmingham, Birmingham, AL

4:44 p.m. - 4:54 p.m.

Wake Forest University Graduate School of Biomedical Sciences

SPEAKERS

- **Erik Brady, Ph.D.**, Director Wake Forest Graduate Programs in Biomedical Sciences, Winston Salem, NC
- **Bernard Roper, Ph.D.**, Director, Experiential Learning & Internships Wake Forest Graduate Programs in Biomedical Sciences, Winston Salem, NC

4:56 p.m. - 5:06 p.m.

Michigan State University - The Graduate School

SPEAKER

- **Steven Thomas, M.S.**, Program Manager, Michigan State University- Graduate School, East Lansing, MI

5:08 p.m. - 5:18 p.m.

Merck KGaA

SPEAKERS

- **Marie-Ange Noué, Ph.D.**, Director, US Medical Information, EMD Serono, A business of Merck KGaA, Darmstadt, Germany, Grimsby, ON, Canada
- **Darris Johnson**, Senior Account Manager, MilliporeSigma, A business of Merck KGaA, Darmstadt, Germany, Houston, TX

5:20 p.m. - 5:30 p.m.

Exhibitor Spotlight - III (Q&A Session)

5:45 p.m. - 7:00 p.m.

Virtual Exhibit Hall Live Chat

(Recommended for All Attendees)

5:45 p.m. - 7:00 p.m.

TWD-PDO Meeting

(For TWD program directors only)

THURSDAY, NOVEMBER 12

CONCURRENT PROFESSIONAL DEVELOPMENT SESSIONS

SESSION 1

12:00 noon - 12:45 p.m.

Overcoming Imposter Syndrome and Stereotype Threat

(Recommended for Community College, Undergraduate, and Postbaccalaureate Students)

MODERATOR

- **Alexius Lampkin, Ph.D.**, Candidate, University of Wisconsin-Madison, Madison, WI

SPEAKER

- **Alden Landry, M.D., M.P.H.**, Harvard Medical School, Boston, MA

SESSION 2

12:00 noon - 12:45 p.m.

Anatomy of a Strong Diversity Statement

(Recommended for Graduate Students and Postdoctoral Scientists)

SPEAKERS

- **Lloyd Munjanja, Ph.D.**, University of Illinois Urbana Champaign, Champaign County, IL
- **Danielle Watt, Ph.D.**, University of Minnesota, Medical School, Minneapolis, MN





MERCK

INVENTING FOR LIFE

Highlights from the Pharmaceutical Industry

Friday, November 13
03:00PM - 03:10PM EST



We believe it is our responsibility to deliver healthier tomorrows through the 5 focus areas of our work: pharmaceuticals, oncology, vaccines, animal health, and our discovery hubs – all working to help patients and communities around the world. From the first diphtheria antitoxin introduction in 1895, all the way to responding to the Ebola outbreak in 2019, our people have made it possible to deliver a high quality, reliable supply of products and solutions to customers and patients on time, every time.

www.merck.com/careers



Training future leaders in medicine and biomedical research

SCHOOL OF MEDICINE

GRADUATE SCHOOL OF
BIOMEDICAL SCIENCES



CONCURRENT ORAL PRESENTATIONS – IV

SESSION 1

12:55 p.m. - 1:55 p.m.

Discipline: Cell Biology

(Recommended for All Attendees)

MODERATOR

- **Tracy Johnson, Ph.D.**, University of California, Los Angeles, Los Angeles, CA

PRESENTERS

- 12:55 p.m. - 1:05 p.m.
0-37 Clarisa Martinez, University of California, Irvine
- 1:07 p.m. - 1:17 p.m.
0-38 Vellia Zhou, Albert Einstein College of Medicine
- 1:19 p.m. - 1:29 p.m.
0-39 Gabriel Platas, Texas A&M University - Kingsville
- 1:31 p.m. - 1:41 p.m.
0-40 Carmelissa Norbrun, Harvard Medical School
- 1:43 p.m. - 1:53 p.m.
0-41 Salma AshShareef, University of Iowa

SESSION 2

12:55 p.m. - 1:55 p.m.

Discipline: Microbiology

(Recommended for All Attendees)

MODERATOR

- **Alfredo Torres, Ph.D.**, University of Texas Medical Branch, Galveston, TX

PRESENTERS

- 12:55 p.m. - 1:05 p.m.
0-42 Jacob Jones, Georgia Southern University
- 1:07 p.m. - 1:17 p.m.
0-43 Emmanuella Kyllians, Alcorn State University
- 1:43 p.m. - 1:53 p.m.
0-44 Ivan Chavez, University of California, Los Angeles
- 1:19 p.m. - 1:29 p.m.
0-45 J'Zaria Simpson, Savannah State University
- 1:31 p.m. - 1:41 p.m.
0-46 Viren Baharani, University of North Carolina at Chapel Hill

SESSION 3

12:55 p.m. - 1:55 p.m.

Discipline: Neuroscience

(Recommended for All Attendees)

MODERATOR

- **Ramesh Raghupathi, Ph.D.**, Drexel University, Philadelphia, PA

PRESENTERS

- 12:55 p.m. - 1:05 p.m.
0-47 Omina Nazarzoda, New York University
- 1:07 p.m. - 1:17 p.m.
0-48 Mariah Antopia, University of Texas at San Antonio
- 1:19 p.m. - 1:29 p.m.
0-49 Yuqing Huang, University of California, Los Angeles
- 1:31 p.m. - 1:41 p.m.
0-50 Therese Arevalo, University of California, Los Angeles
- 1:43 p.m. - 1:53 p.m.
0-51 Anna Voss, Emory University

SESSION 4

12:55 p.m. - 1:55 p.m.

Discipline: Social and Behavioral Sciences and Public Health

(Recommended for All Attendees)

MODERATOR

- **Joseph Urban, Ph.D.**, Southern University Shreveport Louisiana, Shreveport, LA

PRESENTERS

- 12:55 p.m. - 1:05 p.m.
0-52 Ayana Brower, University of North Carolina, Greensboro
- 1:07 p.m. - 1:17 p.m.
0-53 Daniela Shill, Memorial Sloan Kettering Cancer Center
- 1:19 p.m. - 1:29 p.m.
0-54 Jasmin Thames, Kennedy Krieger Institute
- 1:31 p.m. - 1:41 p.m.
0-55 Isabel Zepeda, Indiana University–Purdue University Indianapolis
- 1:43 p.m. - 1:53 p.m.
0-56 Vivian Flanagan, University of Maryland

CONCURRENT ORAL PRESENTATIONS – V

SESSION 1

2:05 p.m. - 2:40 p.m.

Discipline: Biochemistry and Molecular Biology

(Recommended for All Attendees)

MODERATOR

- **Charles Bevins, Ph.D.**, University of California, Davis, Davis, CA

PRESENTERS

- 2:05 p.m. - 2:15 p.m.
0-57 Lauryn Brown, Virginia Commonwealth University
- 2:17 p.m. - 2:27 p.m.
0-58 Brandon Ellison, Winthrop University
- 2:29 p.m. - 2:39 p.m.
0-59 Gabriela Salcedo, University of California, Irvine

SESSION 2

2:05 p.m. - 2:40 p.m.

Discipline: Developmental Biology and Genetics

(Recommended for All Attendees)

MODERATORS

- **Marlene de la Cruz, Ph.D.**, University of California, Irvine, Irvine, CA

PRESENTERS

- 2:17 p.m. - 2:27 p.m.
0-60 Dianne Gomez, University of California, Los Angeles
- 2:29 p.m. - 2:39 p.m.
0-61 Soha Sohail, Wayne State University - School of Medicine
- 2:05 p.m. - 2:15 p.m.
0-62 Samuel Craig, University of Oregon

SESSION 3

2:05 p.m. - 2:40 p.m.

Discipline: Engineering, Physics and Mathematics

(Recommended for All Attendees)

MODERATOR

- **Angela Alexander-Bryant, Ph.D.**, Clemson University, Clemson, SC

PRESENTERS

- 2:05 p.m. - 2:15 p.m.
0-63 Adam Clements, University of California, Los Angeles
- 2:17 p.m. - 2:27 p.m.
0-64 Jasson Crentsil, U.S. Food and Drug Administration
- 2:29 p.m. - 2:39 p.m.
0-65 Gerardo Figueroa, The University of Arizona

SESSION 4

2:05 p.m. - 2:40 p.m.

Discipline: Physiology and Pharmacology / Social and Behavioral Sciences and Public Health

(Recommended for All Attendees)

MODERATOR

- **Amanda Marie James, Ph.D.**, Emory University, Atlanta, GA

PRESENTERS

- 2:05 p.m. - 2:15 p.m.
0-66 Tariq Masri-Zada, Wayne State University
- 2:17 p.m. - 2:27 p.m.
0-67 Lizeth Gutierrez, University of California, Irvine
- 2:29 p.m. - 2:39 p.m.
0-68 Justin Huang, Memorial Sloan Kettering Cancer Center





**St. Jude Children's
Research Hospital**
Graduate School of
Biomedical Sciences

**Accepting
Applications**

July 15 - December 1

Explore an extraordinary PhD program at one of the world's premier research and treatment centers for pediatric cancer and childhood disease.

With leading-edge science, unparalleled resources, and an immersive clinical experience, our graduate program is designed for innovative, research-oriented students who will help discover the next generation of cures.

Throughout your doctoral training, you will be supported by a generous stipend and benefits, extraordinary core facilities, and a collaborative, close-knit research environment — all in the heart of the vibrant city of Memphis.

Graduate School: stjude.org/graduate-school
E-newsletter: stjude.org/graduate-school-subscribe



Go Beyond the Script.

At the University of Kentucky College of Pharmacy, we know that life-saving patient care starts with an innovative and bold education — but also an inclusive one. We're committed to rising to the challenge. Join us?

 **College of
Pharmacy**

LIVE CHAT BY SPECIAL INTEREST TOPICS

LIVE CHAT 1

2:50 p.m. - 3:45 p.m.

Mental Health and Wellness in the Face of COVID-19: The Influence of Isolation and Identity on our Scientific Research Community

(Recommended for Community College, Undergraduate, and Postbaccalaureate Students)

FACILITATORS

- **D'Anne Duncan, Ph.D.**, University of California, San Francisco, San Francisco, CA
- **Christina Keeton, Ph.D.**, Vanderbilt University, Nashville, TN
- **Erica Sanchez, Ph.D.**, San Francisco State University, San Francisco, CA
- **Anne Sufka, B.S.**, University of California, San Francisco, San Francisco, CA

LIVE CHAT 2

2:50 p.m. - 3:45 p.m.

Understanding Grant Peer Review: The View from NIH

(Recommended for Graduate Students and Postdoctoral Scientists)

FACILITATORS

- **Dario Dieguez, Jr., Ph.D.**, National Institute on Aging, NIH, Bethesda, MD
- **Kimberly Firth, Ph.D.**, National Institute on Aging, NIH, Bethesda, MD

LIVE CHAT 3

2:50 p.m. - 3:45 p.m.

Using Holistic Admissions to Support Diversity and Inclusion in Graduate Education

(Recommended for Nonstudents)

FACILITATOR

- **John Augusto, Ph.D.**, Georgia State University, Atlanta, GA

LIVE CHAT 4

2:50 p.m. - 3:45 p.m.

Jump Start Networking and Job Searching with an All-Star LinkedIn Profile

(Recommended for Graduate Students and Postdoctoral Scientists)

FACILITATOR

- **Josh Henkin, Ph.D.**, STEM Career Services, Atlanta, GA

CONCURRENT ORAL PRESENTATIONS - VI

SESSION 1

4:00 p.m. - 4:35 p.m.

Discipline: Biochemistry and Molecular Biology

(Recommended for All Attendees)

MODERATORS

- **Gustavo Silva, Ph.D.**, Duke University, Durham, NC

PRESENTERS

- 4:00 p.m. - 4:10 p.m.
0-69 Felix Argueta, University of California, Irvine
- 4:12 p.m. - 4:22 p.m.
0-70 Grace Olofintuyi, Spelman College
- 4:24 p.m. - 4:34 p.m.
0-71 Zeihkia Byrd, Hendrix College

SESSION 2

4:00 p.m. - 4:35 p.m.

(Recommended for All Attendees)

Discipline: Computational and Systems Biology

MODERATOR

- **Bolaji Thomas, Ph.D.**, Rochester Institute of Technology, Rochester, NY

PRESENTERS

- 4:00 p.m. - 4:10 p.m.
0-72 Judith Landau, University of California, Los Angeles
- 4:12 p.m. - 4:22 p.m.
0-73 Olufolakemi Olusanya, University of Virginia
- 4:24 p.m. - 4:34 p.m.
0-74 Madeleine Wallace, Hamilton College



Discover WPI – a premier STEM university offering 50+ graduate programs on campus and online

➔ grad.wpi.edu



Worcester Polytechnic Institute



At the University of Minnesota, we support the academic and personal success of students from all backgrounds with resources to foster their retention and graduation from our biomedical sciences PhD programs and our MD/PhD program. Learn more about these programs and our undergraduate summer research programs by visiting:

Life Science Summer Undergraduate Research Program ([LSSURP](#))

Office of Biomedical Graduate Research, Education, and Training ([BGREAT](#))

Medical Scientist Training Program (MD/PhD) ([MSTP](#))

SESSION 3**4:00 p.m. - 4:35 p.m.**

(Recommended for All Attendees)

*Discipline: Immunology / Microbiology***MODERATOR**

- **Alfredo Torres, Ph.D.**, University of Texas Medical Branch, Galveston, TX

PRESENTERS

- **4:00 p.m. - 4:10 p.m.**
0-75 Natalia Avina-Ochoa, Salk Institute for Biological Studies
- **4:12 p.m. - 4:22 p.m.**
0-76 Aaron Abai, Harvard College
- **4:24 p.m. - 4:34 p.m.**
0-77 Sarwesh Rauniyar, Fred Hutchinson Cancer Research Center

SESSION 4**4:00 p.m. - 4:35 p.m.**

(Recommended for All Attendees)

*Discipline: Social and Behavioral Sciences and Public Health***MODERATOR**

- **Cherrie Boyer, Ph.D.**, University of California, San Francisco, San Francisco, CA

PRESENTERS

- **4:00 p.m. - 4:10 p.m.**
0-78 Jada Gonzales, Virginia Commonwealth University
- **4:12 p.m. - 4:22 p.m.**
0-79 Ariel Liberchuk, Memorial Sloan Kettering Cancer Center
- **4:24 p.m. - 4:34 p.m.**
0-80 Jerbrea Powell, Tougaloo College

EXHIBITOR SPOTLIGHT - IV**4:45 p.m. - 5:30 p.m.****Exhibitor Spotlights with Q&A**

(Recommended for All Attendees)

MODERATOR

- **Tiffani Fonseca, M.B.A.**, American Society for Microbiology, Washington, DC

4:45 p.m. - 4:55 p.m.*LSAMP NSF International Center of Excellence - UIC Chicago***SPEAKERS**

- **Lucy Okumu, Ph.D.**, Director, International Office, King Abdullah University of Science & Technology Thuwal, Kingdom of Saudi Arabia
- **Denise Yates, M.A.**, Director for Programs and Site Coordinator/Director NSF LSAMP Bridge to the Doctorate at UIC and Co-PI LSAMP NSF International Center of Excellence (LSAMP-NICE), University of Chicago, Chicago, IL

4:57 p.m. - 5:07 p.m.*MIT Health Sciences Technology***SPEAKER**

- **Julie E. Greenberg, Ph.D.**, Director of Education, Harvard-MIT Program in Health Sciences and Technology, Cambridge, MA

5:09 p.m. - 5:19 p.m.*Northwestern University, The Graduate School***SPEAKER**

- **M. Rashaad Barnett, M.Ed.**, Program Coordinator, The Graduate School, Northwestern University, Chicago, IL

5:20 p.m. - 5:30 p.m.*Exhibitor Spotlight - IV (Q&A Session)***5:45 p.m. - 7:00 p.m.****Virtual Exhibit Hall Live Chat**

(Recommended for All Attendees)

5:45 p.m. - 7:00 p.m.**NIGMS Program Director Discussion**

(For TWD program directors only)



FRIDAY, NOVEMBER 13

CONCURRENT PROFESSIONAL DEVELOPMENT SESSIONS

SESSION 1

12:00 noon - 12:45 p.m.

Professional Identity Formation: Reflection and Personal Storytelling as Tools for Learning

(Recommended for Community College, Undergraduate, and Postbaccalaureate Students)

MODERATOR

- **Maricarmen Rojas-López, Ph.D.**, Harvard Medical School, Boston, MA

SPEAKER

- **Robert Trevino, M.D. Ph.D.**, Medical College of Wisconsin and Children's Wisconsin, Wauwatosa, WI

SESSION 2

12:00 noon - 12:45 p.m.

Postdoc Fundamentals: Selecting a Training Experience to Match Your Career Goals

(Recommended for Graduate Students and Postdoctoral Scientists)

SPEAKERS

- **Sibby Anderson-Thompkins, Ph.D.**, University of North Carolina at Chapel Hill, Chapel Hill, NC
- **Alberto Roca, Ph.D.**, DiverseScholar, Orange County, CA



CONCURRENT SCIENTIFIC SESSIONS

SESSION 1

12:55 p.m. - 1:25 p.m.

Understanding Emerging Viruses

(Recommended for All Attendees)

MODERATOR

- **Marlene de la Cruz, Ph.D.**, University of California, Irvine, CA

SPEAKER

- **Kellie Jurado, Ph.D.**, University of Pennsylvania, Philadelphia, PA

SESSION 2

12:55 p.m. - 1:25 p.m.

Ubiquitin in the Breaking and Making of Proteins during Stress

(Recommended for All Attendees)

MODERATOR

- **Candice Etson, Ph.D.**, Wesleyan University, Middletown, CT

SPEAKER

- **Gustavo Silva, Ph.D.**, Duke University, Durham, NC

SESSION 3

12:55 p.m. - 1:25 p.m.

Towards Personalized Articular Cartilage Engineered Tissues

(Recommended for All Attendees)

MODERATOR

- **Abiraman Srinivasan, Ph.D.**, Community College of Allegheny County, Pittsburgh, PA

SPEAKER

- **Nehal Abu-Lail, Ph.D.**, University of Texas at San Antonio, San Antonio, TX

Join our community.
Change the world.



careers-llnl.ttcportals.com
st.llnl.gov/research/core-competencies

**Lawrence Livermore
National Laboratory**

Portions of this work were performed under the auspices of the U.S. Department of Energy by Lawrence Livermore National Laboratory under Contract No. DE-AC52-07NA27344. LLNL-MB-816531

**THE FUTURE
OF SCIENCE
IS HERE**



At Genentech, we know that the little things we do add up to big breakthroughs. Making a difference in the lives of millions starts when you make a change in yours. If you're interested in our internships, rotational programs, or postdoc roles, check out all of our early-in-career opportunities at go.gene.com/early_career.

Genentech is an Equal Opportunity Employer: Minorities/Women/Disability/Veteran

Genentech
A Member of the Roche Group

SESSION 4**12:55 p.m. - 1:25 p.m.****Mitochondrial Networking in Times of Integrated Stress**

(Recommended for All Attendees)

MODERATOR

- **Tracy Johnson, Ph.D.**, University of California, Los Angeles

SPEAKER

- **Antentor Hinton, Jr., Ph.D.**, University of Iowa Carver College of Medicine, Iowa City, IA

EXHIBITOR SPOTLIGHT - V**1:35 p.m. - 2:45 p.m.****Exhibitor Spotlights with Q&A**

(Recommended for All Attendees)

MODERATOR

- **Tiffani Fonseca, M.B.A.**, American Society for Microbiology, Washington, DC

1:35 p.m. - 1:45 p.m.**The Jackson Laboratory****SPEAKERS**

- **Brent Berwin, Ph.D.**, Director, Courses and Conferences, The Jackson Laboratory, Bar Harbor, ME
- **Michael McKernan**, Program Director, STEM and Undergraduate Education, The Jackson Laboratory, Bar Harbor, ME

1:47 p.m. - 1:57 p.m.**Lawrence Livermore National Laboratory****SPEAKER**

- **Salustra Urbin, B.S.**, Biomedical Scientist, Physical and Life Sciences Directorate, Biosciences & Biotechnology Division, Lawrence Livermore National Laboratory, Livermore CA

1:59 p.m. - 2:09 p.m.**National Research Mentoring Network (NRMN)****SPEAKER**

- **Jamboor K. Vishwanatha, Ph.D.**, Principal Investigator, National Research Mentoring Network-Resource Center, Fort Worth, TX

2:11 p.m. - 2:21 p.m.**UT Health San Antonio****SPEAKERS**

- **Nicquet Blake, Ph.D.**, Sr. Associate Dean of Admissions and Student Affairs at UT Health San Antonio, San Antonio, TX
- **José Cavazos, M.D., Ph.D.**, Assistant Dean and Director, South Texas MSTP, San Antonio, TX

2:23 p.m. - 2:33 p.m.**Indiana University, School of Medicine****SPEAKERS**

- **Tara Hobson, M.A.**, Director of Graduate Programs and Student Success, Indiana University School of Medicine, Indianapolis, IN
- **Gustavo Arrizabalaga, Ph.D.**, Professor and Assistant Dean of Diversity, Indiana University School of Medicine, Indianapolis, IN

2:35 p.m. - 2:45 p.m.**Exhibitor Spotlight - V (Q&A Session)****EXHIBITOR SPOTLIGHT - VI****3:00 p.m. - 3:35 p.m.****Exhibitor Spotlights with Q&A**

(Recommended for All Attendees)

MODERATOR

- **Christopher Skipwith, Ph.D.**, American Society for Microbiology, Washington, DC

3:00 p.m. - 3:10 p.m.**Merck & Co., Inc.****SPEAKERS**

- **Abdellatif El Marrouni, Ph.D.**, Associate Principal Scientist, Chemistry, Merck & Co., Inc., Kenilworth, NJ
- **Lorena Rico, Ph.D.**, Scientist, Chemistry, Merck & Co., Inc., Kenilworth, NJ
- **Daniel Wyss, Ph.D.**, Senior Principal Scientist, Chemistry, Merck & Co., Inc., Kenilworth, NJ
- **Mary Jo Wildey, Ph.D.**, Director, Pharmacology, Merck & Co., Inc., Kenilworth, NJ



REGENERON

**CREATE
THE
FUTURE
YOU
BELIEVE
IN**

Visit careers.regeneron.com
to learn more



Virginia-Maryland
College of Veterinary Medicine



DISCOVER



YOUR



ROLE

becomeavet.vetmed.vt.edu

3:12 p.m. - 3:22 p.m.

Emory University

SPEAKER

- **Amanda Marie James, Ph.D.**, Assistant Dean, Diversity, Inclusion, and Community Engagement, James T. Laney School of Graduate Studies at Emory University, Faculty, Department of Biology, College of Arts and Sciences at Emory University, Atlanta, GA

3:25 p.m. - 3:35 p.m.

Exhibitor Spotlight - VI (Q&A Session)

CAREER PATHWAY SPOTLIGHT

THIS SESSION IS SPONSORED BY NOVARTIS

3:45 p.m. - 4:25 p.m.

(Recommended for All Attendees)

MODERATOR

- **Russette Lyons, Ph.D.**, Novartis, Cambridge, MA

PRESENTERS

- **Eric Hall II, Ph.D.**, Alliance Leader, Janssen, Greater Boston, MA
- **Adora Ndu, PharmD. J.D.**, Vice President, Regulatory Affairs, BioMarin Pharmaceutical, Inc., San Rafael, CA
- **Mahlet Woldemariam, M.S., M.B.A.**, Global Project Manager, Immunology & Inflammation, Sanofi, Cambridge, MA

4:30 p.m. - 5:15 p.m.

Presentation Awards and Closing Remarks

(Recommended for All Attendees)

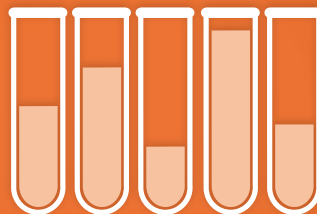
PRESENTERS

- **Avery August, Ph.D.**, Cornell University, Ithaca, NY
- **Irene Hulede**, American Society for Microbiology, Washington, DC



POSTDOCTORAL ENRICHMENT PROGRAM

DIVERSITY IN SCIENCE



BURROUGHS
WELLCOME
FUND 

DEADLINE: JANUARY 14, 2021

bwfund.org/pdep | [@bwfund](https://twitter.com/bwfund)





EMORY

LANEY
GRADUATE
SCHOOL



EMORY DIVERSIFYING
GRADUATE EDUCATION



EMORY

LANEY
GRADUATE
SCHOOL

Laney EDGE

209 Administration Building · 201 Dowman Drive
Atlanta, GA 30322, USA

+1 (404) 727-6028

laney.edge@emory.edu

www.gs.emory.edu/diversity



Follow us on Twitter!

@LaneyEDGE

HELPING YOU ADVANCE

YOUR SCIENCE

Share your research, learn and collaborate in your scientific area or related discipline.

YOUR NETWORK

Expand your professional network locally and globally.

YOUR CAREER

Support for you as you start your professional journey.

YOUR COMMUNITY

Communicate and disseminate science to the public and support evidence-based policies at the local and national level.

Join or Renew for 2021

Use code **ABRCMS20** and save \$5 on ASM Student Membership

asm.org/membership



AMERICAN
SOCIETY FOR
MICROBIOLOGY

SAVE THE DATE



ABRCMS 2021

ATLANTA, GA

November 17 - 20

(Pending COVID-19 Updated Status)



Contact Information

Project Lead, Plenary Sessions and Affiliated Events

Irene Hulede
ihulede@asmusa.org

Conference Program: Scientific and Professional Development Sessions

Tiffani Fonseca
tfonseca@asmusa.org

Student Presentations and Judges Program

Leah Dixon
ldixon@asmusa.org

ABRCMS Online

Christopher Skipwith
cskipwith@asmusa.org

Exhibits & Sponsorship

abrcmsexhibits@asmusa.org

Registration

abrcms@experient-inc.com

ABRCMS Mailing and E-mail Address

ABRCMS
ASM Education Department
1752 N Street, N.W.
Washington, DC 20036
abrcms@asmusa.org

Funded by



National Institute of
General Medical Sciences



Managed by
**AMERICAN
SOCIETY FOR
MICROBIOLOGY**

Visit www.abrcms.org for more information