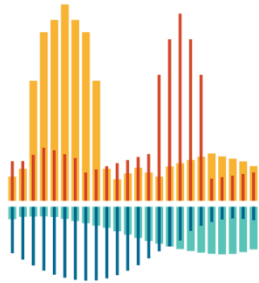


2016 CWRU ICB ANNUAL SYMPOSIUM

AKA

THE NORTH COAST CONFERENCE ON PRECISION MEDICINE



**INSTITUTE FOR
COMPUTATIONAL
BIOLOGY**

September 29, 2016

Dana C. Crawford, PhD
Associate Professor
Epidemiology and Biostatistics
Institute for Computational Biology

PRECISION MEDICINE FOR ALL – ENSURING DIVERSITY IN PARTICIPANTS AND IN PRACTICE



Darcy Freedman, PhD



David Kaelber, MD,
PhD, MPH



Timothy Thornton, PhD



Jacob McCauley, PhD



Minoli Perera,
PharmD, PhD

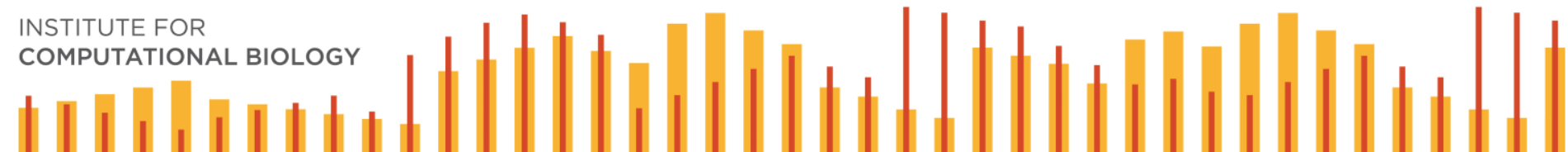


Esteban Burchard,
MD, MPH



Aaron Goldenberg, PhD,
MPH

Our Symposium Speakers



PRESENT-DAY PROBLEMS AND POTENTIALS FOR PRECISION MEDICINE



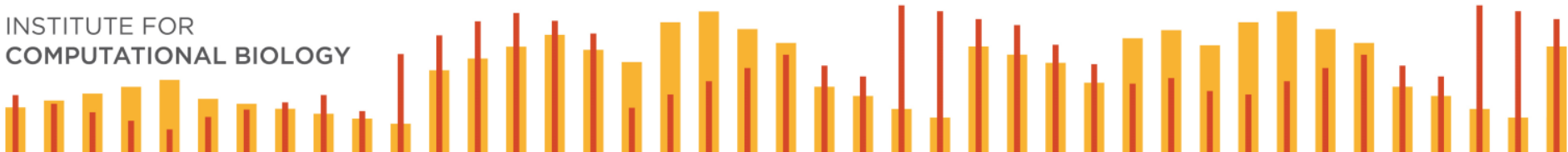
Lunch
Foyer and Ballroom A
Noon – 1:30 pm



Poster session
Foyer
Noon – 1:30 pm



Adaptive Biotechnologies
Patrick Raber, PhD
Noon – 1:00 pm



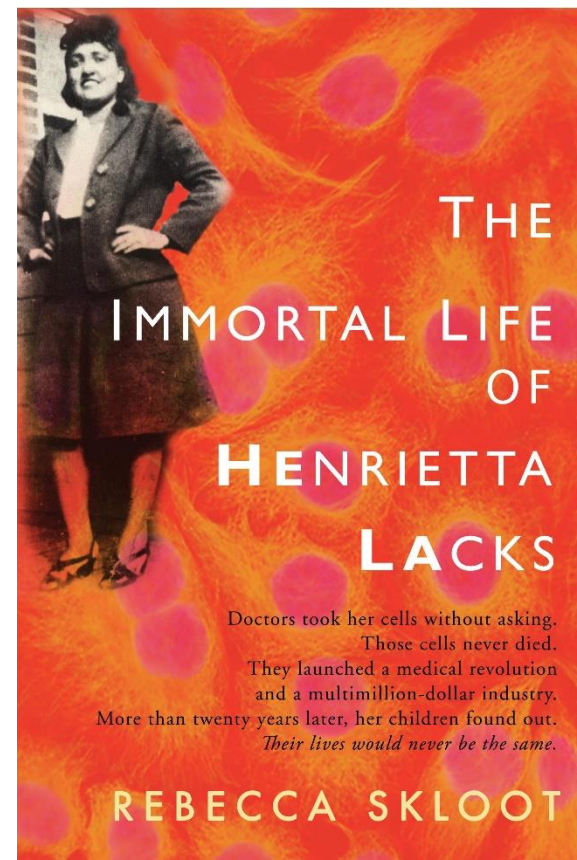
PRECISION MEDICINE FOR ALL – ENSURING DIVERSITY IN PARTICIPANTS AND IN PRACTICE

Special Guests:

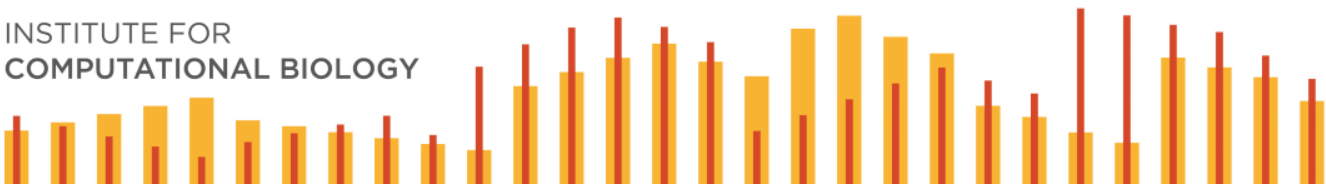
Veronica Robinson

Shirley Lacks

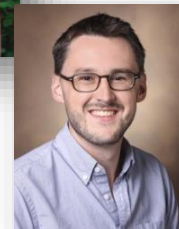
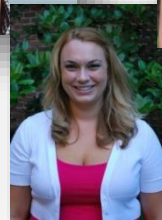
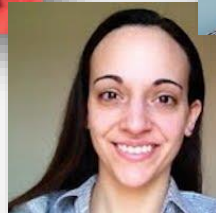
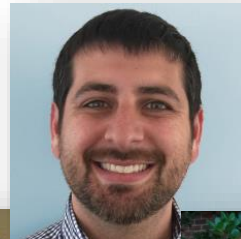
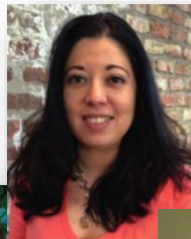
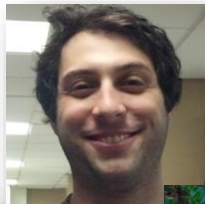
Representing the Lacks family



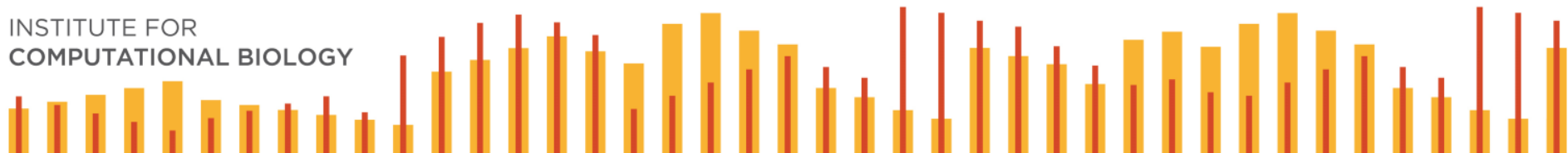
INSTITUTE FOR
COMPUTATIONAL BIOLOGY



TRAVEL AWARDEES (NIH/NHGRI R13HG009481)



INSTITUTE FOR
COMPUTATIONAL BIOLOGY

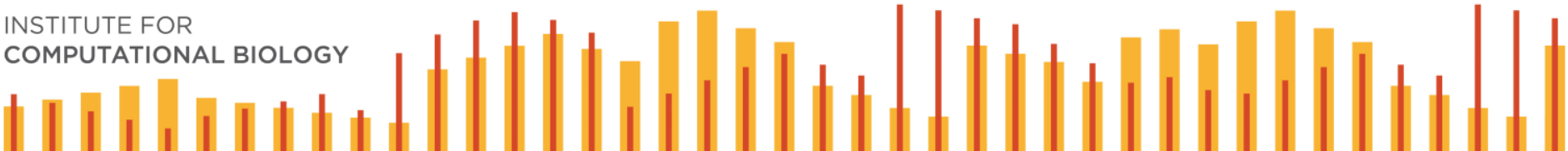


SYMPOSIUM LOGISTICS

New this year!

Continuing Research Education Credits (CRECs)

- Sign in
- Sign out
- Worth 6 CRECs!



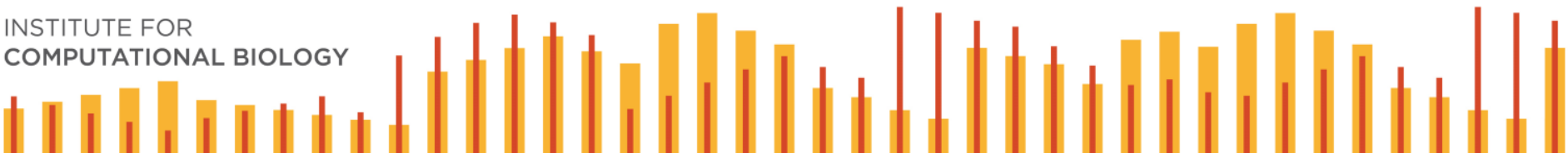
SYMPOSIUM LOGISTICS



Reception

5:00 – 7:00 pm

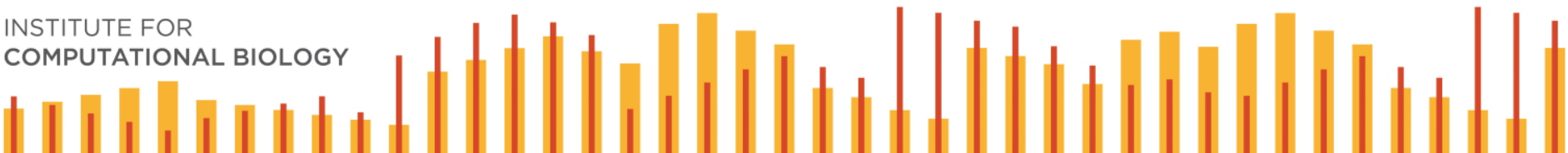
Smith Commons Area
(downstairs)



SYMPOSIUM LOGISTICS



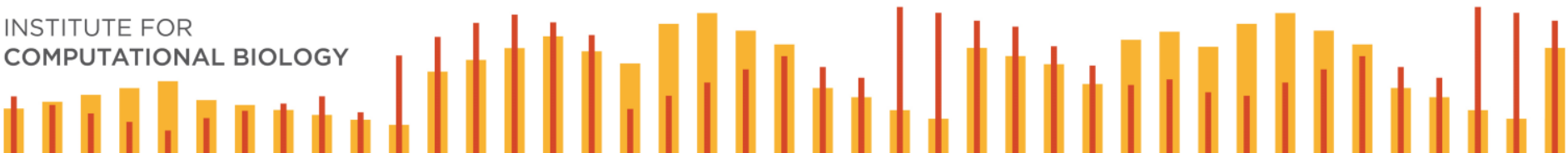
INSTITUTE FOR
COMPUTATIONAL BIOLOGY



SYMPOSIUM LOGISTICS

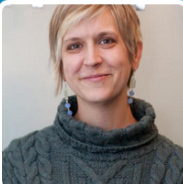


Parking vouchers available for
Lot 29



SOCIAL MEDIA


#ICBSymposium



Home About

TWEETS 50 FOLLOWING 40


sarah pendergrass
@sap_PSU
I am an Assistant Professor at Geisinger Health System. I focus on developing novel computational methods for data analysis as well as data visualization.
Geisinger Health System
Joined March 2013
Photos and videos



Home About

TWEETS 466 FOLLOWING 205


Marylyn ritchie
@MarylynRitchie
Director, Center for Systems Genomics; The Huck Institutes for the Life Sciences, Pennsylvania State University
Pennsylvania State University
ritchielab.psu.edu
Joined October 2011
6 Photos and videos



Home About

TWEETS 104 FOLLOWING 152 FOLLOWERS 73 FAVORITES 3


Janina M. Jeff
@Jeff_et_al
Postdoc at Mount Sinai School of Medicine. Genetic epidemiologist and population geneticist.
New York, NY
wand.mtsinai.org
Photos and videos



Home About

TWEETS 13 FOLLOWING 17


Atul Butte
@atulbutte
Fascinating article from the @NYTimes on how universities can battle over biomedical research faculty members buff.ly/1KgR7dl
View summary



Home About

TWEETS 13 FOLLOWING 17

Atul Butte
@atulbutte
CONGRATS to @CDBustamante, named the 1st department chair of Biomedical Data Sciences at @StanfordII is.gd/nUm2Ne



Tweets Tweets replies Photos & videos

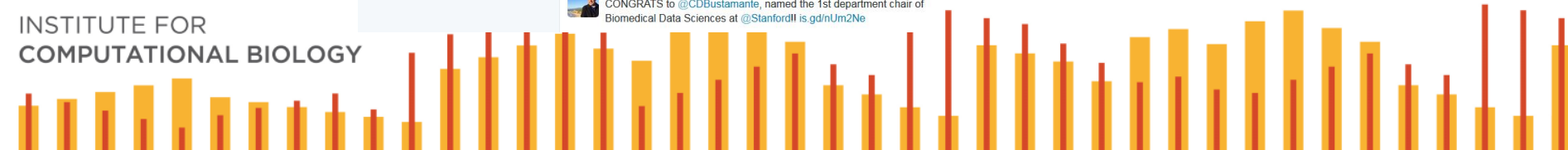
Janina M. Jeff @Jeff_et_al · Sep 6
Just checked out the great migration exhibit at MoMA very cool how genetics and sociology can tell the same story #howscientistsspend Sundays
1 retweet 1 like

Janina M. Jeff @Jeff_et_al · Aug 27
Irish, Creole, Belarus, Korea. @Kennylabour @EimearEKenny
1 retweet 1 like

New to Twitter?
Sign up now to get your own personalized timeline!
Sign up

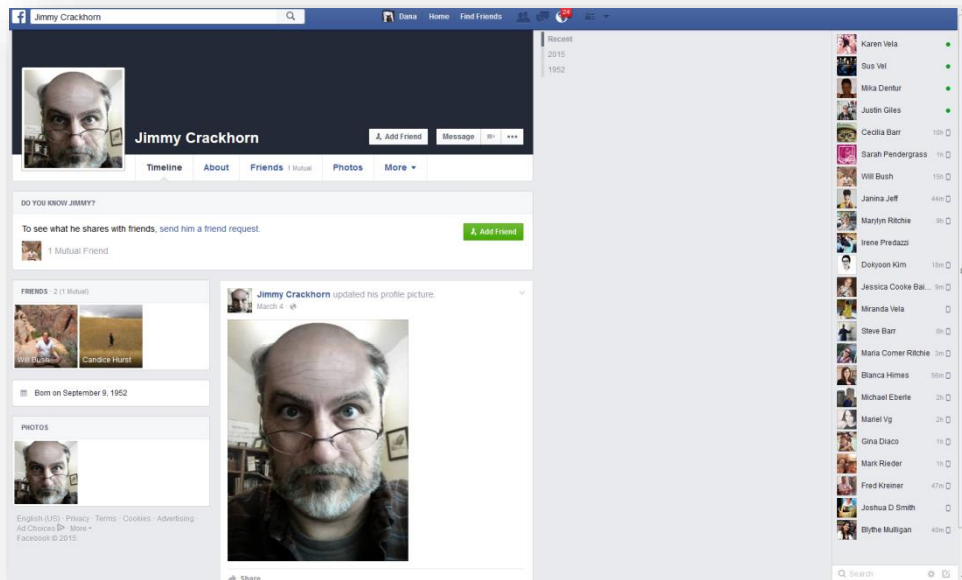
You may also like · Refresh
Gonzalo Abecasis @gabecasis
Eimear Kenny @EimearEKenny
Amanda Markelson @AmandaMarkelson

INSTITUTE FOR
COMPUTATIONAL BIOLOGY

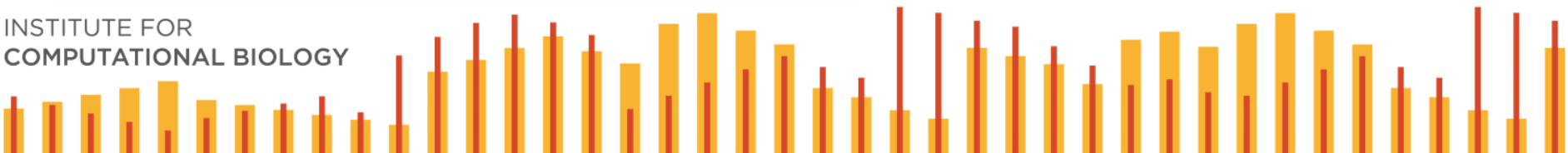


SOCIAL MEDIA

#ICBSymposium

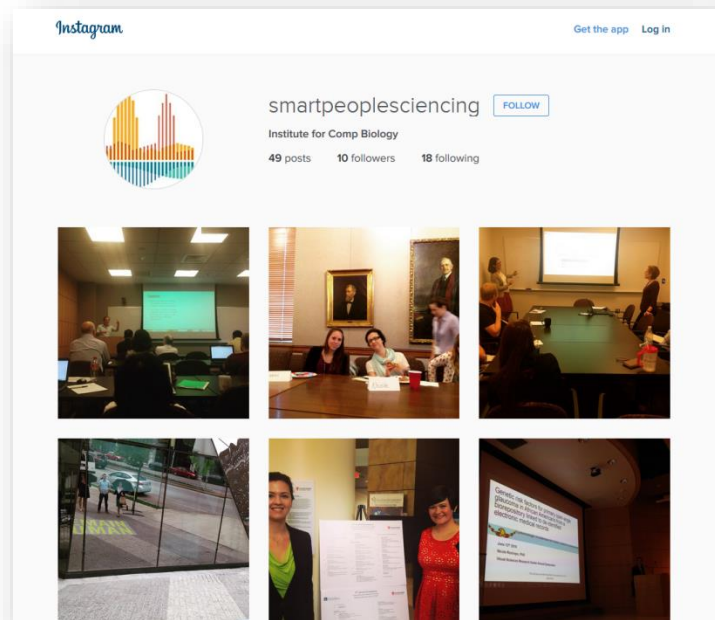


No FB yet, but please use the hashtag anyway!



SOCIAL MEDIA

#ICBSymposium



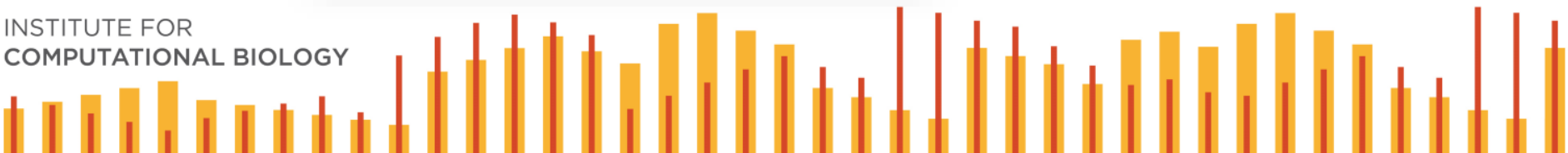
We're on Instagram!

INSTITUTE FOR
COMPUTATIONAL BIOLOGY

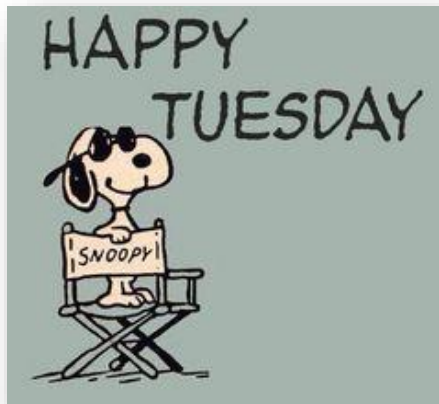
SYMPOSIUM LOGISTICS



INSTITUTE FOR
COMPUTATIONAL BIOLOGY



SPECIAL THANKS



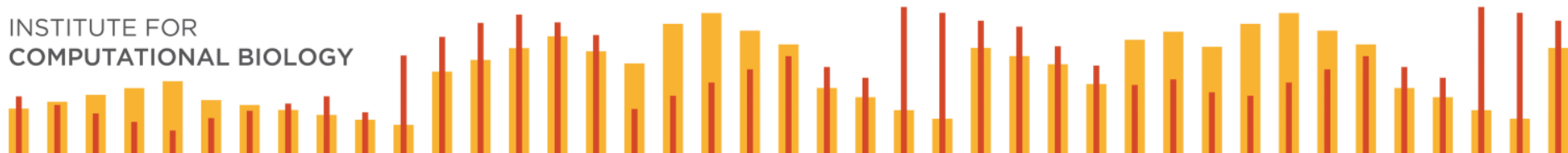
Tuesday Gibson
Administrative Assistant



Will Bush, PhD, MS
Director of Visual Communications



Ricky Chan, PhD
Director
Computational Core



SPECIAL THANKS



NIH/NHGRI R13009481

UCITE Nord Grant

Cell and Molecular Biology Training Program

T32 GM008056-34

CWRU Department of Bioethics

INSTITUTE FOR
COMPUTATIONAL BIOLOGY

